

Customer :

customer

Customer part :

customer part

Comment :

Comment

S1=7.52

S2=6.73

Tmax=466

Tp S2=505.0

PI=0.53

HI=90

Sample =1752.80

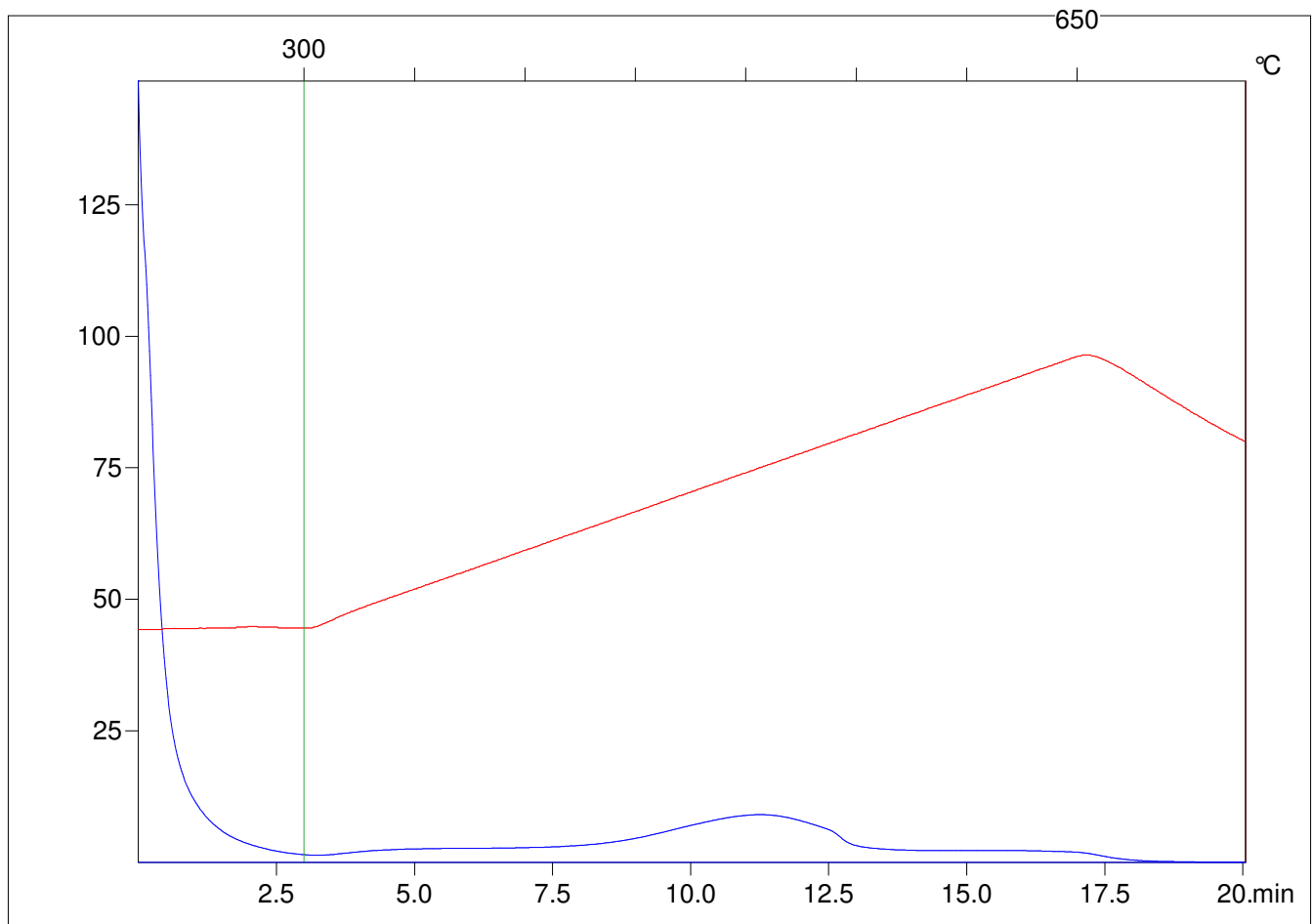
Method =Bulk Rock

Cycle=Basic

KFID(10\*9)=1444

Qty =70.5

TOC=7.5



C:\VINC\PK3\_1792\PK005.R00 : FID pyrolysis graphic

State

Pyro Status

Oxi Status